



AT 22
22 Tonne Lifting Capacity
Pick & Carry Crane
Datasheet
Metric

AT 22



Features: AT 22

- ▶ 22 tonne at 1.4 m radius
- ▶ 1.7 tonne at 15.8 m radius
- ▶ 17 m maximum hook height
- ▶ Hook block (4 parts) capacity 16.8 tonne
- ▶ Single line 4.2 tonne

WORKS FOR YOU.™

LOAD CHART

AT 22

Fallblock



Pick & Carry 0.4m/s (1.44 km/h); On rubber 66.6%



5.67-13.85 m

AS 1418.5

m	Boom Length (m)																	m	
	5.67	6.00	6.50	7.00	7.50	8.00	8.50	9.00	9.50	10.00	10.50	11.00	11.50	12.00	12.50	13.00	13.50		13.85
1.6	16800	16150	15350	14800															
	16800	16150	15350	14800															
	48°	51°	54°	57°															
2.0	16800	16800	16400	15600	15000	14600													
	16350	16350	16300	15600	15000	14600													
	42°	46°	50°	53°	56°	58°													
2.5	14600	14550	14550	14550	14500	14250	13700	13200											
	12900	12900	12900	12850	12850	12850	12850	12800											
	34°	39°	44°	48	51°	54°	56°	58°											
3.0	12000	12000	12000	12000	11950	11950	11950	11950	11900	11150									
	10600	10600	10600	10600	10600	10550	10550	10550	10550	10550									
	25°	31°	37°	42°	46°	49°	52°	55°	57°	59°									
3.5	10150	10150	10150	10150	10150	10150	10100	10100	10100	10100	9450	8150							
	8950	9000	8950	8950	8950	8950	8950	8900	8900	8900	8900	8150							
	8°	20°	29°	36°	41°	45°	48°	51°	53°	55°	57°	59°							
4.0	9950	9000	8800	8750	8750	8750	8750	8750	8700	8700	8700	7600	7050	6800					
	8750	7950	7750	7750	7700	7700	7700	7700	7700	7700	7700	7600	7050	6800					
	(3.57)	(3.90)	19°	28°	35°	39°	43°	47°	49°	52°	54°	56°	57°	59°					
4.5			7900	7700	7700	7700	7700	7650	7650	7650	7650	7100	6600	6350	6100	5900			
			6950	6750	6750	6750	6750	6750	6750	6750	6750	6750	6600	6350	6100	5900			
			(4.40)	18°	27°	34°	38°	42°	45°	48°	50°	52°	54°	56°	58°	59°			
5.0				7000	6850	6850	6850	6800	6800	6800	6800	6650	6200	5950	5700	5500	5350	5200	
				6150	6000	6000	6000	6000	6000	6000	6000	5950	5950	5950	5700	5500	5350	5200	
				(4.90)	18°	27°	33°	37°	41°	44°	47°	49°	51°	53°	55°	56°	58°	59°	
6.0					6250	5650	5550	5550	5550	5550	5550	5500	5500	5300	5050	4900	4700	4600	
					5500	4950	4850	4850	4850	4850	4850	4850	4800	4800	4800	4800	4700	4600	
					(5.40)	(5.90)	17°	25°	31°	35°	39°	42°	45°	47°	49°	51°	53°	54°	
7.0						5150	4700	4600	4600	4600	4600	4600	4600	4600	4550	4400	4250	4000	
						4500	4100	4000	4000	4000	4000	4000	4000	4000	4000	4000	4000	4000	
						(6.40)	(6.90)	16°	24°	29°	34°	37°	40°	43°	45°	47°	48°		
8.0							4300	4000	3900	3900	3900	3900	3900	3900	3900	3850	3700	3600	
							3750	3450	3400	3400	3400	3400	3400	3400	3400	3400	3400	3400	
							(7.40)	(7.90)	15°	23°	28°	32°	36°	38°	41°	43°			
9.0								3700	3400	3400	3400	3400	3400	3400	3400	3400	3300		
								3200	2950	2900	2900	2900	2900	2900	2900	2900	2900		
								(8.40)	(8.90)	15°	22°	27°	31°	34°	36°				
10.0												3200	3000	2950	2950	2950	2950		
												2750	2500	2500	2500	2500	2500		
												(9.40)	(9.90)	14°	21°	26°	29°		
11.0															2800	2600	2600	2600	
															2300	2150	2100	2100	
															(10.40)	(10.90)	13°	18°	
11.75																	2450	2350	
																	1950	1850	
																	(11.40)	(11.75)	

- RC (kg) at 0° articulation
- RC (kg) at 40° articulation
- Boom angle
- Radius at 0° boom angle
- Loads above red line are structural

Notes to lifting capacity

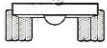
Lifting capacities do not exceed 66.6% of tipping load. Weight of hook blocks and slings is part of the load, and is to be deducted from the capacity ratings. Consult Rated Capacity Manual for further details.

Note: Data published herein is intended as a guide only and shall not be construed to warrant applicability for lifting purposes. Crane operation is subject to the computer charts and Rated Capacity Manual both supplied with the crane.

LOAD CHART

AT 22

Fallblock, Manual

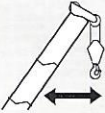


Pick & Carry 0.4 m/s (1.44 km/h); On rubber 66.6%



9.72–17.90 m

AS 1418.5

Maximum Radius 	Rated Capacity Maximum Extension Maximum Length 17.90 m	
	m	kg
6.74	2900	
	2900	
		60°
9.31	2500	
	2500	
		50°
11.53	2250	
	2150	
		40°
13.34	2050	
	1700	
		30°
14.67	1850	
	1400	
		20°
15.51	1750	
	1300	
		10°
15.80	1700	
	1250	
		0°

Notes to lifting capacity

Read and understand warning notes before operating crane.

Weight of slings & hook block to be added to load.

Maximum extension length is 17.90 m.

17.9 m boom length includes manual 3rd extension.

Ratings for manual extension are structural and based on boom angle, not radius.

The ratings do not change if the power sections are retracted with the manual section extended.

Lifting capacities do not exceed 66.6% of tipping load.

Weight of hook blocks and slings is part of the load, and is to be deducted from the capacity ratings.

Consult Rated Capacity Manual for further details.

Data published herein is intended as a guide only and shall not be construed to warrant applicability for lifting purposes. Crane operation is subject to the computer charts and Rated Capacity Manual both supplied with the crane.

- RC (kg) at 0° articulation
- RC (kg) at 40° articulation
- Boom angle
- Loads above red line are structural